



Sevier County Bank

Floor 3 (14,815 sq. ft.) | **Floor 4** (14,147 sq. ft.) are Available to Lease

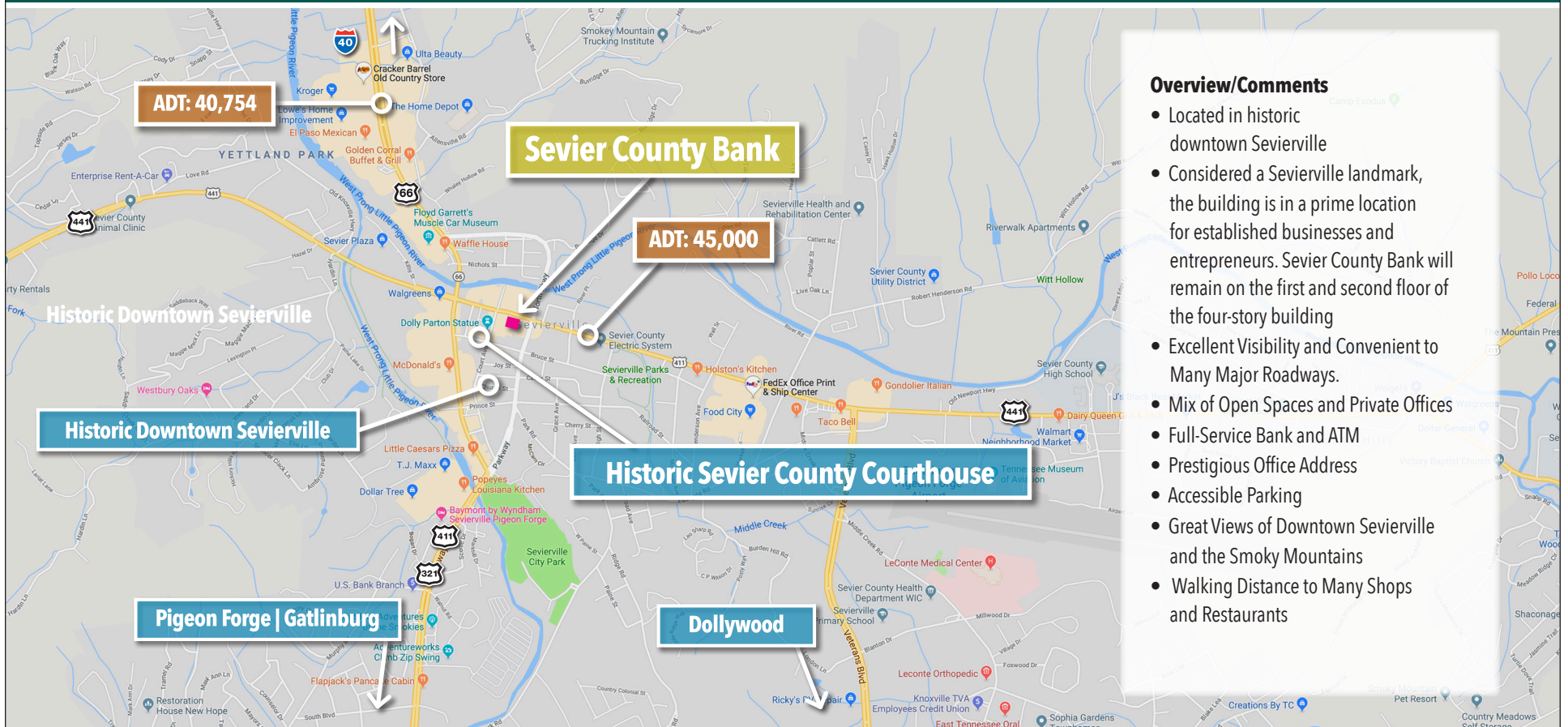


Keith Widmer
865-777-0000 Office
keithwidmer@sigreusa.com

Nick Widmer
865-777-0000 Office
865-567-4237 Mobile
nickwidmer@sigreusa.com

FOR LEASE

Located in Historic Downtown Sevierville



Overview/Comments

- Located in historic downtown Sevierville
- Considered a Sevierville landmark, the building is in a prime location for established businesses and entrepreneurs. Sevier County Bank will remain on the first and second floor of the four-story building
- Excellent Visibility and Convenient to Many Major Roadways.
- Mix of Open Spaces and Private Offices
- Full-Service Bank and ATM
- Prestigious Office Address
- Accessible Parking
- Great Views of Downtown Sevierville and the Smoky Mountains
- Walking Distance to Many Shops and Restaurants

Sevier County Bank

Floor 3 (14,815 sq. ft.) | **Floor 4** (14,147 sq. ft.) are Available to Lease

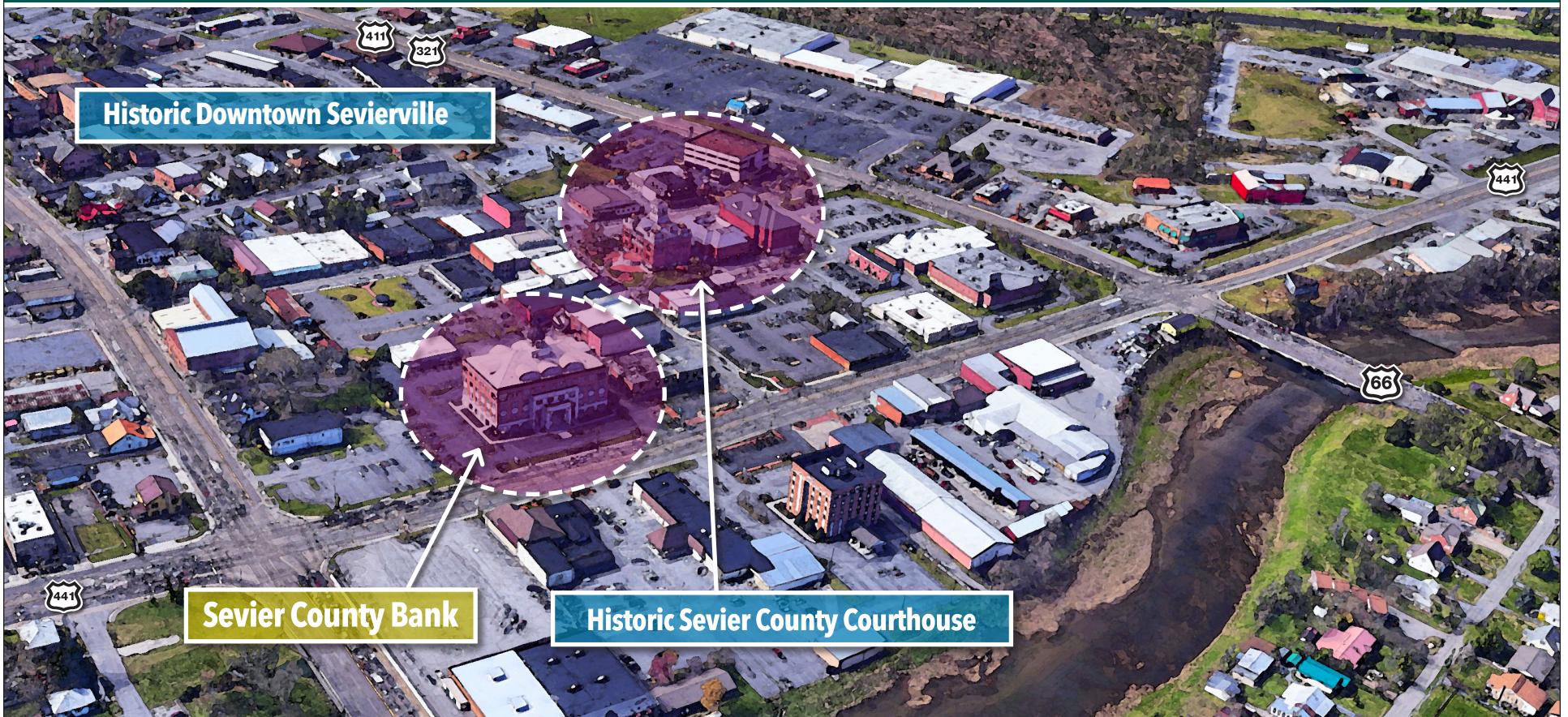


Keith Widmer
865-777-0000 Office
keithwidmer@sigreusa.com

Nick Widmer
865-777-0000 Office
865-567-4237 Mobile
nickwidmer@sigreusa.com

FOR LEASE

Located in Historic Downtown Sevierville



Sevier County Bank

Floor 3 (14,815 sq. ft.) | **Floor 4** (14,147 sq. ft.) are Available to Lease

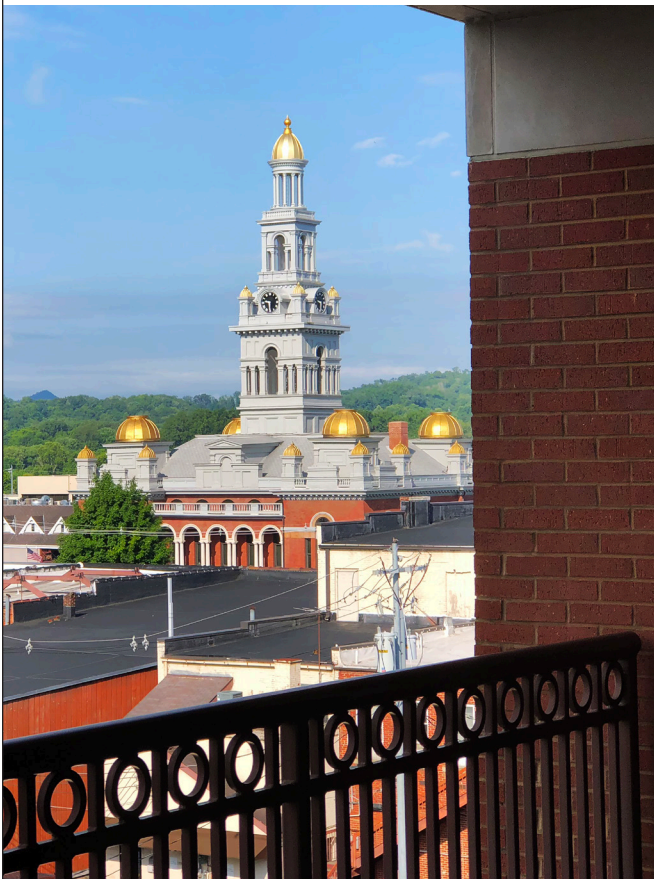


Keith Widmer
865-777-0000 Office
keithwidmer@sigreusa.com

Nick Widmer
865-777-0000 Office
865-567-4237 Mobile
nickwidmer@sigreusa.com

FOR LEASE

Located in Historic Downtown Sevierville



Sevier County Bank

Floor 3 (14,815 sq. ft.) | **Floor 4** (14,147 sq. ft.) are Available to Lease



Keith Widmer
865-777-0000 Office
keithwidmer@sigreusa.com

Nick Widmer
865-777-0000 Office
865-567-4237 Mobile
nickwidmer@sigreusa.com

FOR LEASE

Located in Historic Downtown Sevierville



Sevier County Bank will remain on the first and second floor of the four-story building.



Floor 3 (14,815 sq. ft.) Unfinished



Keith Widmer
865-777-0000 Office
keithwidmer@sigreusa.com

Nick Widmer
865-777-0000 Office
865-567-4237 Mobile
nickwidmer@sigreusa.com

FOR LEASE

Located in Historic Downtown Sevierville

SIGREUSA.COM



Floor 4 (14,147 sq. ft.) Features some of the finest Class A office space available in the Sevierville Region



Keith Widmer
865-777-0000 Office
keithwidmer@sigreusa.com

Nick Widmer
865-777-0000 Office
865-567-4237 Mobile
nickwidmer@sigreusa.com

FOR LEASE

Located in Historic Downtown Sevierville



Floor 4 (14,147 sq. ft.) Features some of the finest Class A office space available in the Sevierville Region

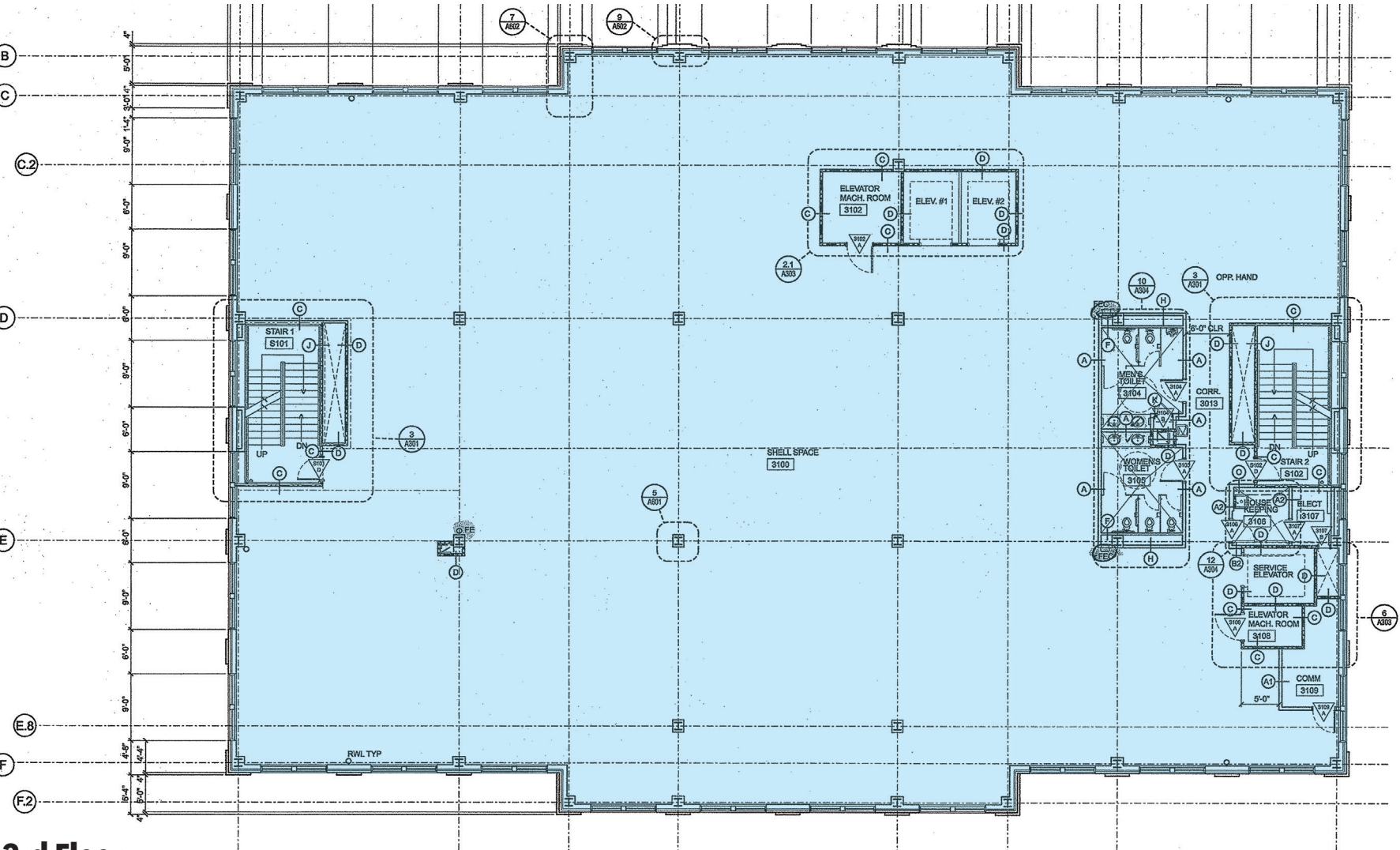


Keith Widmer
865-777-0000 Office
keithwidmer@sigreusa.com

Nick Widmer
865-777-0000 Office
865-567-4237 Mobile
nickwidmer@sigreusa.com

FOR LEASE

Located in Historic Downtown Sevierville



3rd Floor



Keith Widmer

865-777-0000 Office

keithwidmer@sigreusa.com

Nick Widmer

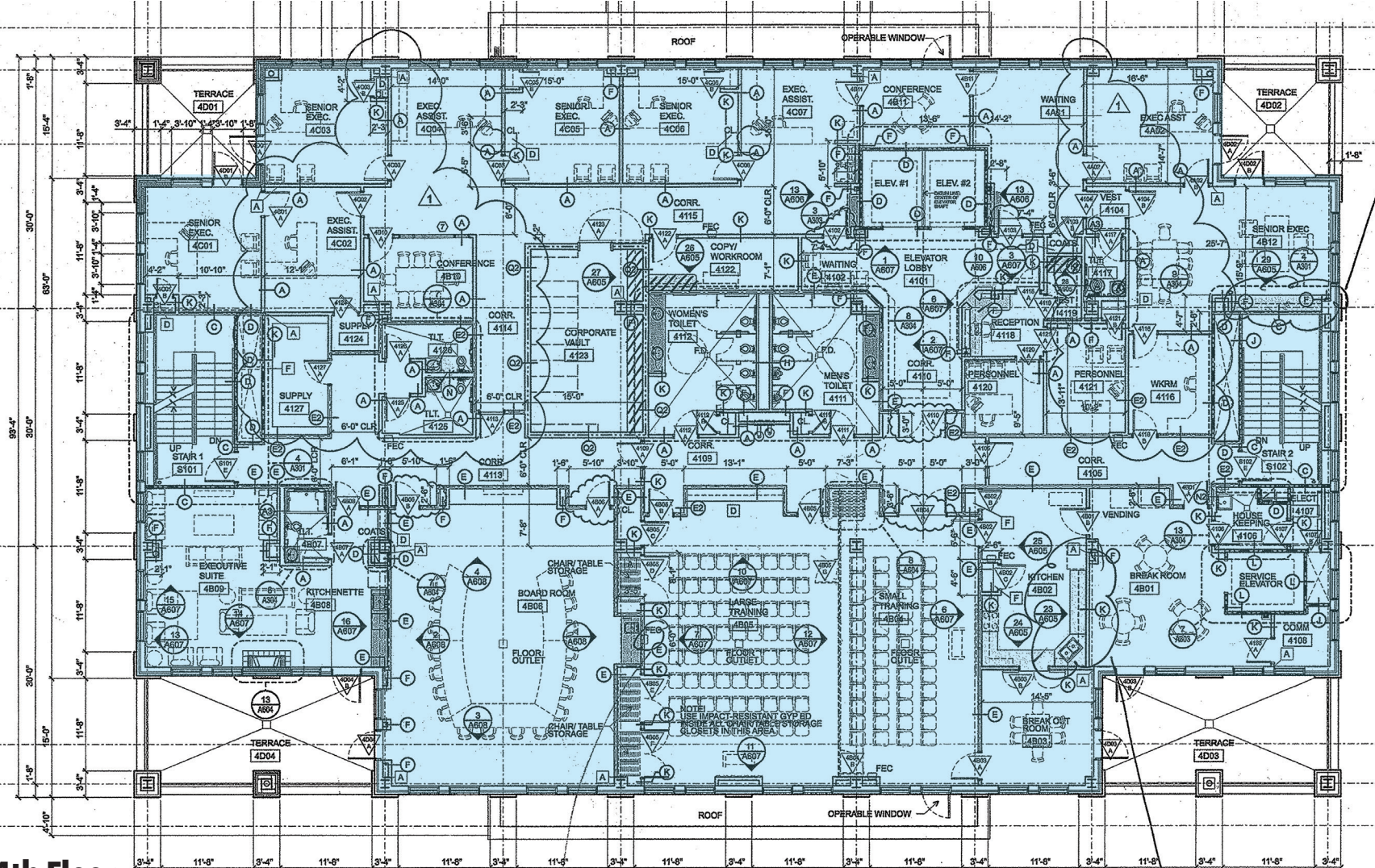
865-777-0000 Office

865-567-4237 Mobile

nickwidmer@sigreusa.com

FOR LEASE

Located in Historic Downtown Sevierville



4th Floor



Keith Widmer
865-777-0000 Office
keithwidmer@sigreusa.com

Nick Widmer
865-777-0000 Office
865-567-4237 Mobile
nickwidmer@sigreusa.com

FOR LEASE

Located in Historic Downtown Sevierville

SIGREUSA.COM

SEVIER COUNTY BANK

PLAY MOVIE



Contact: Keith Widmer
865-777-0000 Office
keithwidmer@sigreusa.com

SIGREUSA.COM
11470 Parkside Drive | Suite 300
Knoxville, TN 37934

FOR LEASE

Located in Historic Downtown Sevierville